

HEALTH AND SCIENCE

Innovation Center



SPRING HILL
COLLEGE



Rooted in its Catholic heritage and continuing the centuries-old Jesuit tradition of educational excellence, Spring Hill College forms students to become responsible leaders in service to others.

We offer our students a thorough preparation for professional excellence; and we strive to awaken mind and spirit to the pursuit of truth and to the ever-deepening appreciation of the beauty of creation, the dignity of life, the demands of justice and the mystery of God's love.





A MESSAGE FROM THE PRESIDENT



As Spring Hill College is approaching its bicentennial in 2030, we are focused on strategic and innovative initiatives that will strengthen our historical place in higher education in Mobile and Alabama. The new 57,000 SF Health and Science Innovation Center will include state of the art equipment and will be open for the Fall 2026 semester. We expect to expand the nursing program from 40 to 120 students, and enhance our status as the #1 Nursing program in the state of Alabama as evidenced by our 100% NCLEX pass rate in 2023. This new building will also enable us to expand our pre-med and health sciences programs from 150 to 200 students as well as expand our overall enrollment at the College. Our Pre-Med students have consistently experienced a 100% acceptance rate into Medical School. We are eager and excited to continue our mission focused on nurturing the growth of the whole person and form leaders in the healthcare field who are engaged in learning, faith, justice and service for life.

A HOME FOR GROWTH

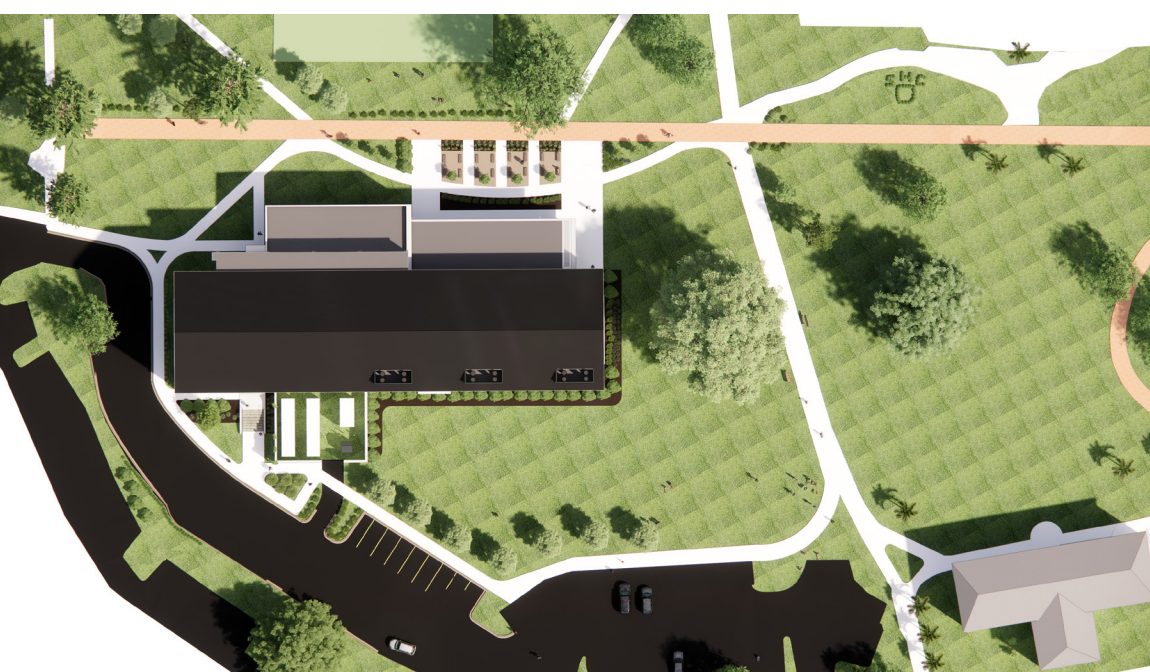


A \$35 million federal appropriation grant supported by Senator Richard Shelby is helping to fund construction of this new, state of the art Health and Science building on Spring Hill's campus. Spring Hill College is raising additional funds to support the construction and cutting-edge equipment for this multipurpose facility.

With classroom, lab, office, and meeting spaces, the new building located in the heart of campus will serve as a resource for the entire Spring Hill College community. The official groundbreaking ceremony for the new building will be in December of 2024 and the building is expected to be completed by Fall 2026.

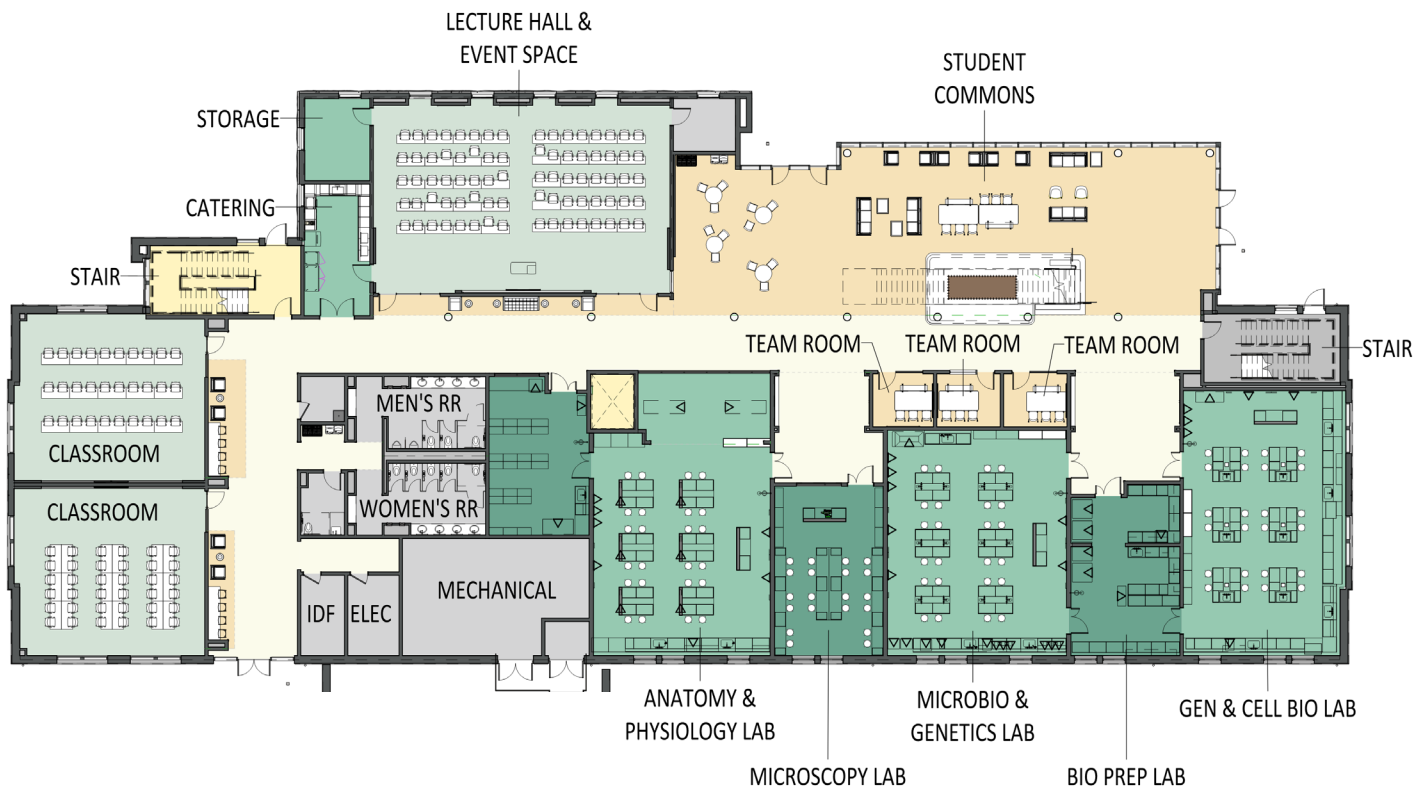


North Elevation 



 Site Plan

LEVEL 1



NAMING OPPORTUNITIES

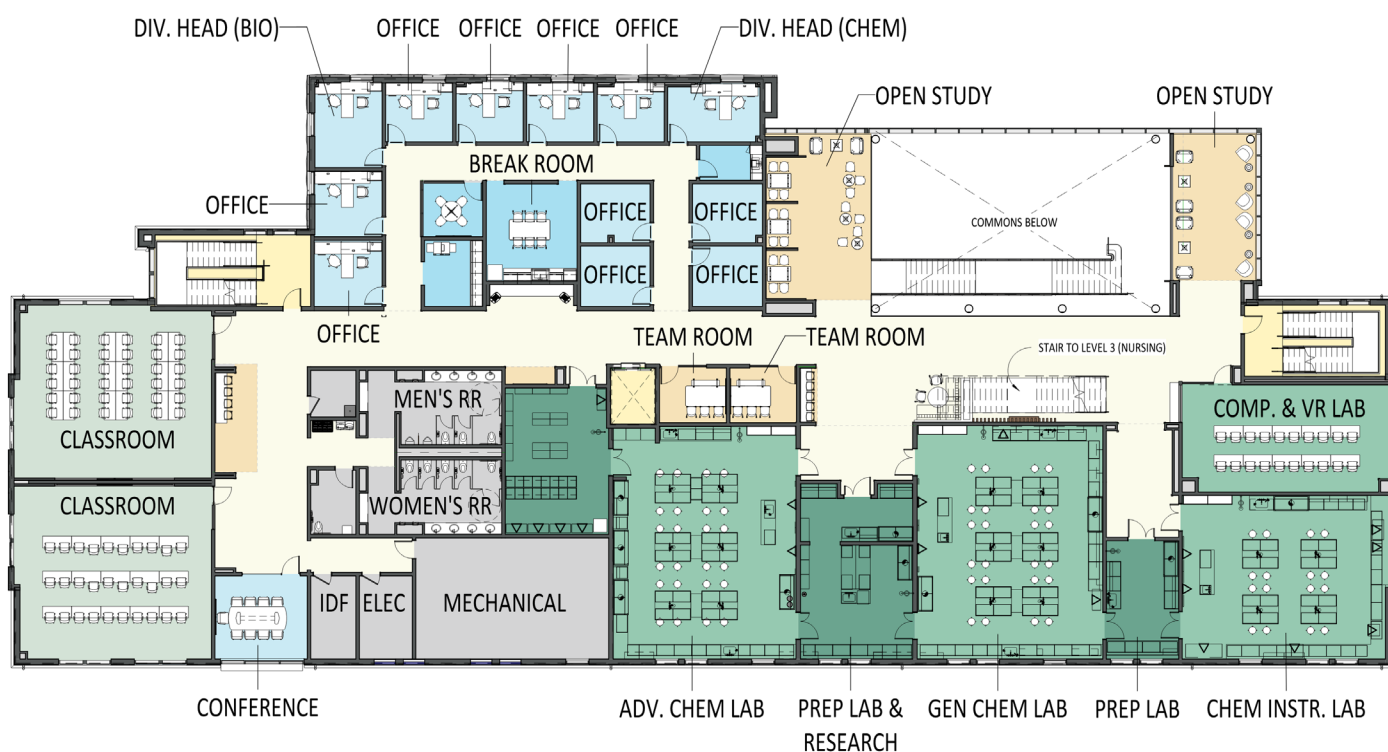
OVERALL BUILDING
SCIENCE COMMONS
EVENT & LECTURE SPACE
CLASSROOMS
BIOLOGY & HEALTH
SCIENCE LABS
TEAM LABS
ANATOMAGE LAB

"I love how the impressive wood design stretching from floor to ceiling in the entrance reflects the grandeur of our Avenue of the Oaks. That's where we hold our Commencement ceremonies each May, and where we send our academically-prepared students out into the world—leaders in service to others."

- Rebecca Cantor, Ph.D.
Provost, Spring Hill College



LEVEL 2



NAMING OPPORTUNITIES

CLASSROOMS
CHEMISTRY LABS
COMPUTER & VR LABS
TEAM ROOMS
CONFERENCE ROOMS
OPEN STUDY COMMONS
FACULTY OFFICES

"The addition of the new Health Science and Innovation Center on Spring Hill Campus is much more than just a new building.

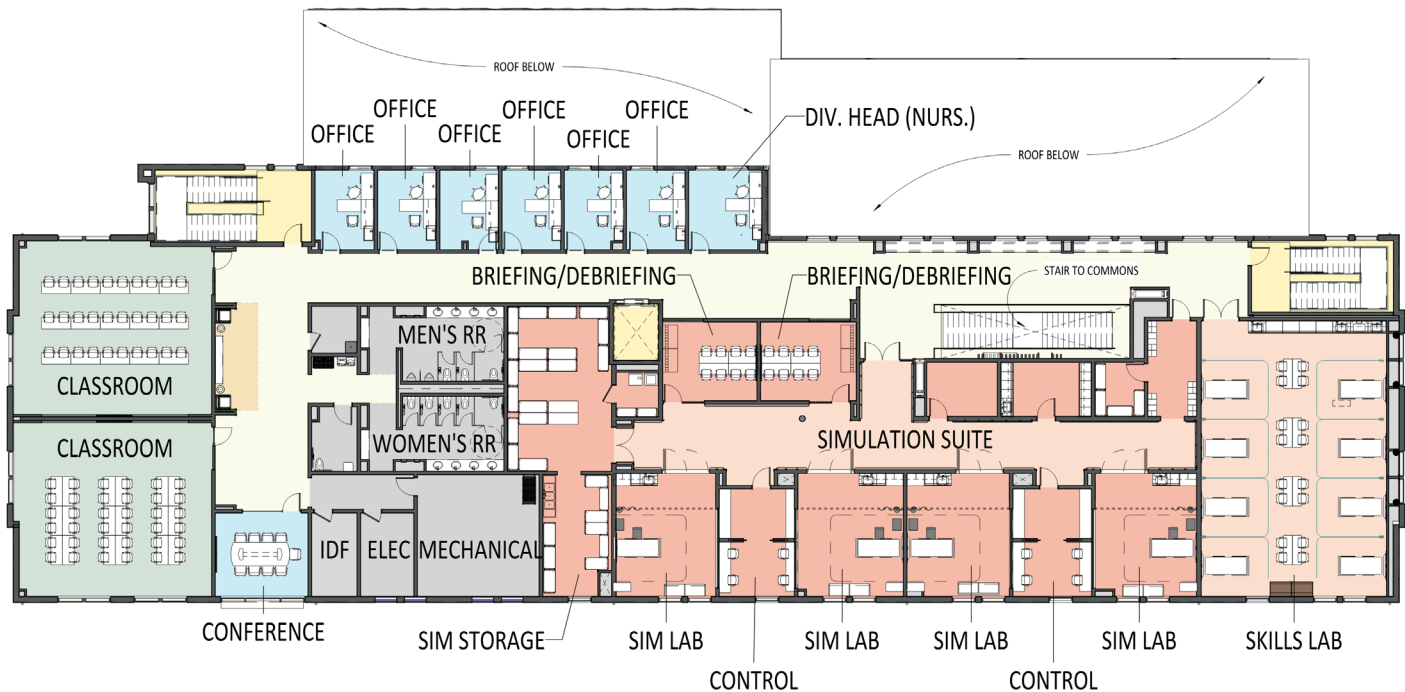
It will be a symbol of an investment into the future of our students.

With new and innovative learning and collaborative spaces, advanced technology, and state-of-the art equipment, there is no doubt that our students will be well prepared for their future careers in health sciences, biology, and chemistry."

- Rebecca Fillmore, Ph.D., Division Chair of Science and Mathematics



LEVEL 3



NAMING OPPORTUNITIES

CLASSROOMS
NURSING SIMULATION LABS
NURSING SKILLS
& ASSESSMENT LAB
NURSING DEBRIEF /
CONFERENCE ROOM
CONFERENCE ROOM
FACULTY OFFICES

"We are so thankful for the generosity of the grant that made our new building possible. State-of-the-art facilities provide a huge advantage for SHC's nursing students, because they will enter the field having learned and trained in a place specifically designed to be on the cutting edge of both science and healthcare. The fact that it will sit on the most beautiful college campus in the south is just a bonus!"

**- Erin Sheppard, DNP, APRN, FNP-BC Chair,
Division of Nursing**



CLASSROOMS AND LABS

Typical Classroom V



The Health and Science Innovation Center will house 6 full size modern classrooms with seating for 30 students. This new building will also feature one large lecture hall, which will also double as an event space providing the ability to seat 80 students in a class setting, or host events of up to 120 people. Thirteen different labs will be held within the building. From a large state of the art simulation lab for nursing students, to virtual reality labs for anatomy classes and more, students will be able to have hands-on experiences in a lab setting with the most up to date technology.



1

PREMIUM ●

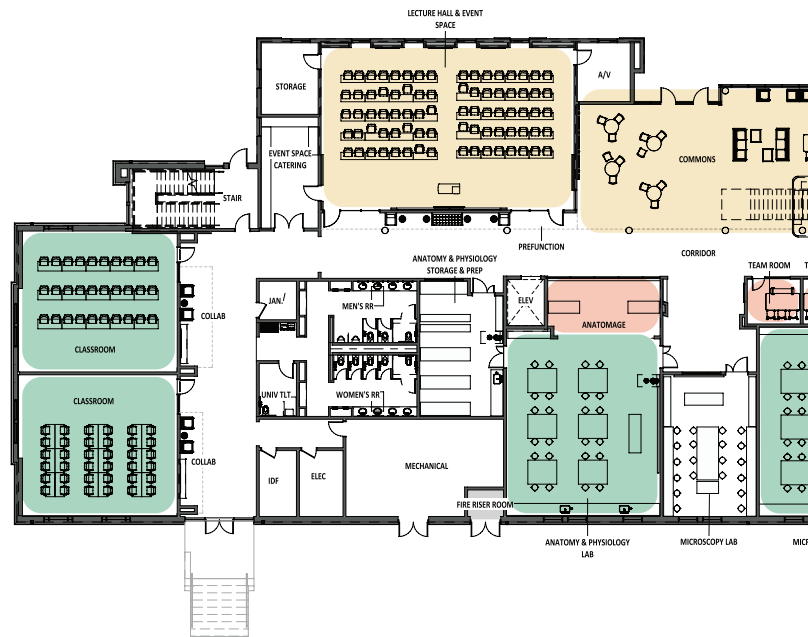
EXTERIOR - OVERALL BUILDING
SCIENCE COMMONS
EVENT AND LECTURE SPACE

MID-VISIBILITY

CLASSROOMS (2)
BIOLOGY & HEALTH SCIENCE LABS (4)

LOWER VISIBILITY

TEAM ROOMS (3)
ANATOMAGE LAB (1)



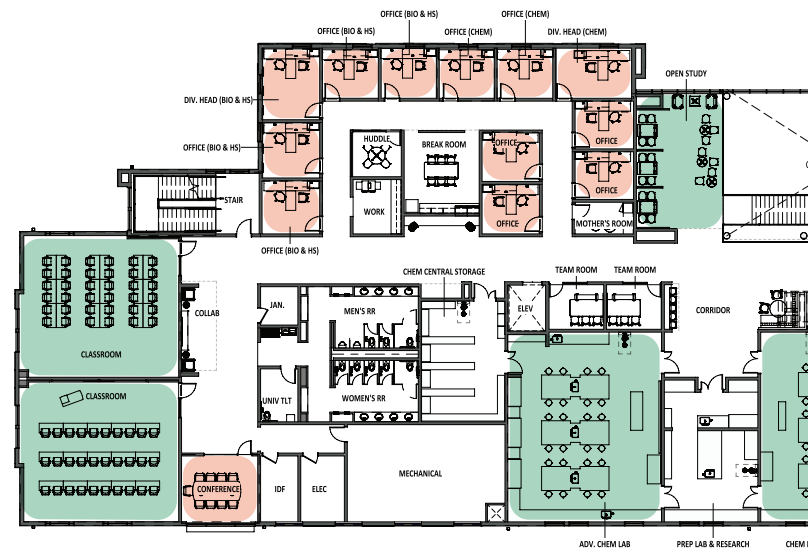
2

MID-VISIBILITY

CLASSROOMS (2)
CHEMISTRY LABS (3)
COMPUTER & VR LAB (1)

LOWER VISIBILITY

TEAM ROOMS (2)
CONFERENCE ROOMS (2)
OPEN STUDY COMMONS (2)
FACULTY OFFICES (12)



3

PREMIUM ●

SIMULATION SUITE

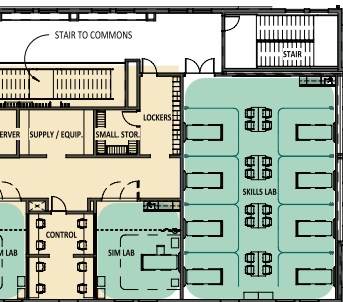
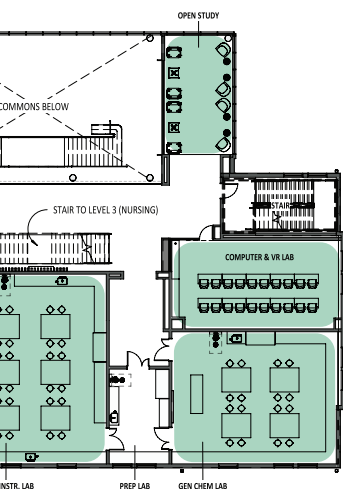
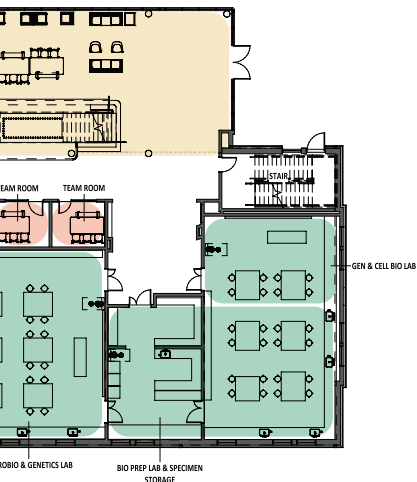
MID-VISIBILITY

CLASSROOMS (2)
NURSING SIMULATION LABS (4)
NURSING SKILLS & ASSESSMENT LAB (1)

LOWER VISIBILITY

NURSING DEBRIEF / CONFERENCE ROOM (2)
CONFERENCE ROOM (1)
FACULTY OFFICES (7)





NAMING OPPORTUNITIES

The college has identified a number of iconic spaces within the new innovation center that will provide naming opportunities through private gifts, including:

PREMIUM SPACES

SPACE NAME	SQUARE FOOTAGE	NAMING INVESTMENT
Nursing Simulation Lab	5,000 SF	\$3,000,000
Lecture Hall & Event Space	1,800 SF	\$2,000,000
Science Commons	2,500 SF	\$1,500,000

MID-VISIBILTY SPACES

SPACE NAME	SQUARE FOOTAGE	NAMING INVESTMENT
Nursing Skills Lab	1,500 SF	\$750,000
Biology & Health Science Labs (3)	1,250 SF	\$500,000
Chemistry Labs (2)	1,250 SF	\$500,000
Microscopy Lab	650 SF	\$250,000
Chemistry Instrumentation Lab	900 SF	\$250,000
Computer & Virtual Reality Lab	650 SF	\$250,000
Simulation Labs (4)	320 SF	\$200,000
Open Study Commons (2)	400 SF	\$175,000

LOWER VISIBILTY SPACES

SPACE NAME	SQUARE FOOTAGE	NAMING INVESTMENT
Anatomage Lab	200 SF	\$150,000
Conference Rooms	250 SF	\$125,000
Classrooms (6)	1,000 SF	\$100,000
Nursing Briefing Rooms (2)	250 SF	\$50,000
Team Rooms (5)	100 SF	\$30,000
Faculty Offices (19)	120 SF	\$25,000



18
FOUNDED
30

SPRING HILL COLLEGE

4000 Dauphin Street
Mobile, AL 36608
251/380-4000
www.shc.edu

This project is supported by the Health Resources and Services Administration (HRSA) of the US Department of Health and Human Services (HHS) as part of an award totaling \$36,615,031 with 5% financed with non-governmental sources. The contents of those of the author(s) do not necessarily represent the official views of, nor an endorsement by HRSA, HHS, or the U.S. Government. For more information, please visit HRSA.gov.