

# The Guide to LIVING ON CAMPUS



SPRING HILL  
COLLEGE



## WELCOME!

As our students live, thrive, make friends, become a community, grow into leaders, and pursue their dreams at Spring Hill College, it is the role of Residence Life to make sure that they have a safe, inclusive, and engaging space to call home.

All of our residential communities are equipped with wireless internet access, laundry facilities, and a variety of common spaces that support both social and academic activities in the residence halls.

Student staff members, also known as Senior Resident Advisors (SRAs and Resident Assistants (RAs), are available in each building to help facilitate student transition to college life, to assist the community in growing together, and to be available if a student is in need. RAs often plan programming in the residence halls and help foster an environment of respect, acceptance and life-long learning. RAs are a great resource for each student to learn new things about campus, make new friends, and even provide some helpful academic insights because they're students too.

Professional staff members also live on campus and are actively interested in student mentorship. These staff members can help direct students looking to develop leadership and programming skills through on-campus experiences. Please feel free to contact the Residence Life Office at any time.

SPRING HILL COLLEGE  
RESIDENCE LIFE OFFICE

Phone: (251) 380-3028 | Fax: (251) 460-2193  
Email: [reslife@shc.edu](mailto:reslife@shc.edu)

## See You on The Hill!

### PACK UP

Less is more. Everything you bring has to fit in your room, so be thoughtful about what you bring with you. There is no extra storage on campus. Spending a few days on campus can give you a better idea of what your day-to-day lifestyle will look like and what items you will need. You can always purchase/bring/send more things later!



Coordinate with your roommate. Be sure to communicate with your roommate ahead of time regarding any items that you would be willing and able to share, such as a TV, mini-fridge, microwave, etc.

### MOVE-IN DAY PROCESS

Check in with Residence Life staff. You will receive more specific information about moving to campus via email. A form of ID is required and all health forms need to be completed.



Head to your residence hall. When that is done, head to your residence hall. Staff will be located at a central location in each building ready to welcome you and provide you with your key(s) and further instructions.

Move everything in before unpacking your room. Faculty, staff, and students will be ready to unload your car as soon as you arrive at the residence hall. Please unload everything at the loading zone and then move your car to the parking area before unpacking your room.

Check the schedule for your next event! Events begin during your first day on campus so be sure to check the schedule you get at check-in so you know what's next.

### MOVE-IN DAY TIPS

Wear comfortable clothes and shoes. Alabama is quite hot during August, so wear something that will keep you cool and comfy.



Drink water! It's going to be hot!!

## THINGS TO **BRING**

### BED AND BATH

- Bedspread or comforter/blankets
- Twin-size sheets (XL)
- Pillows and pillowcases
- Towels and washcloths
- Shower caddy/tote
- Shower shoes/flip-flops
- Bathrobe
- Mattress pad/egg crate

### TOILETRIES

- First aid kit (including bandages, rubbing alcohol, etc.)
- Flashlight
- Laundry basket/bag
- Laundry detergent pods
- Prescribed medications and prescriptions for renewal at a local pharmacy
- Soap, body wash, shampoo, conditioner, toothbrush
- Hair dryer, curling iron, flat iron
- Iron (with auto shut-off)
- Ironing board

### ELECTRONICS

- Surge protectors/power strips (with a safety reset switch)
- Laptop/personal computer
- Ethernet cable for wired access (WiFi also available)
- Cell phone
- Chargers for cell phones, tablets
- Television (basic cable provided in room)
- Video game console and games

### DESK & SCHOOL SUPPLIES

- Desk/floor lamps (non-halogen)
- Light bulbs (Tip: LED bulbs will last longer and are difficult to break)
- Pens, pencils, highlighters
- Notebooks, paper
- Folders
- Stapler, paper clips
- Scissors

### PERSONAL ITEMS

- Student ID
- Drivers License or other ID
- Health Insurance Card
- Seasonal clothing
- Umbrella/raincoat/rain boots (this is a must in Mobile!)
- Clothes hangers
- Blue Painter's Tape (review the policy regarding decoration)
- Cleaning supplies
- Small sewing and tool kits
- Photo album, pictures, camera
- Broom, small vacuum
- Bicycle and lock
- Sunscreen and sunglasses
- Key ring or lanyard
- Wastebasket and trash bags
- Rug

### APPROVED APPLIANCES

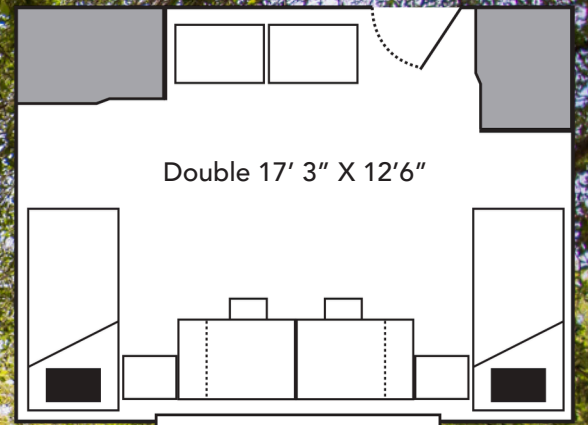
- Small refrigerator (not to exceed 6 cubic feet)
- Microwave ovens (1000 watts or less)

## THINGS TO **LEAVE AT HOME**

- Air conditioners
- Alcohol
- Alcohol "trophies" (Empty alcohol containers used as decoration)
- Any item with an exposed heating coil (such as toasters)
- Candles
- Ceiling fans
- Weapons or replicas (see SHC Weapons Policy)

- Fireworks
- Grills/hibachis (e.g., George Foreman grills)
- Halogen lamps
- Incense
- Hoverboards
- Large furniture (all rooms are furnished)
- Pets (except for fish in an aquarium of up to 10 gallons)
- Realty, street, or road signs

- Sunlamps
- Satellite dishes
- Waterbeds
- Wall-mounting hardware (for a television)
- Wireless routers
- Sub-woofers
- Space heaters



  
**SPRING HILL**  
 COLLEGE  
**VIRAGH HALL**  
 RESIDENCE HALL

**FEATURES**

- Approximately 3 1/2 minute walk to the center of campus.
- Same gender by pod – 12 students with furnished common living area and two common bathrooms.
- Viragh quad located between buildings with fountain and picnic tables.
- Elevator.
- Study and common rooms throughout building including a large television lounge on 1st floor with ping-pong table and kitchen.
- Laundry facilities on 1st floor.
- Cable connection and two internet jacks in each room.
- Blinds.
- Extra-long twin-sized beds.

**FURNITURE SPECIFICATIONS**

**Bed Frame (two):** Length: 83.25”L x 14”H(from the ground)  
 The beds have wooden frames with an extra-long twin mattress. All beds are fixed in height and cannot be bunked.

**Wardrobe Closet (two):** Length: 36”L x 72”H x 21”W  
 Each wardrobe has a bar for hangers and two drawers at the bottom.

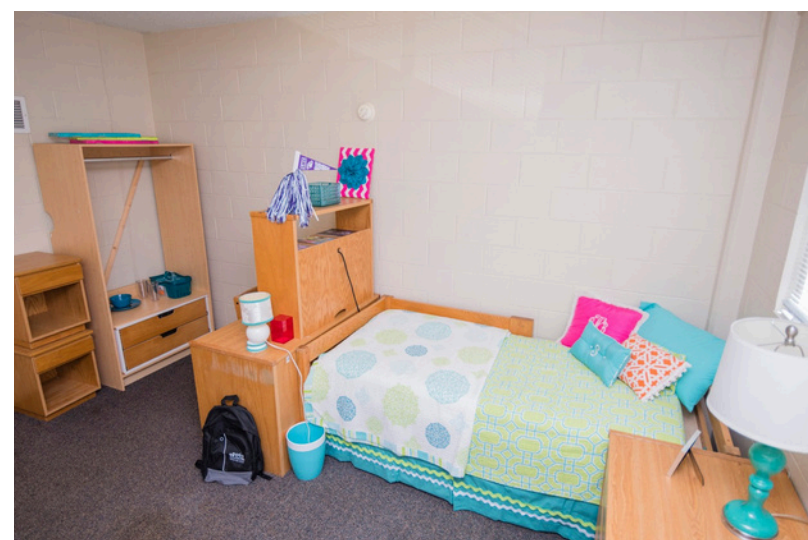
**Desk (two):** 48”L x 29”H x 24”W  
 The desks are wooden with three desk drawers on the right-hand side. There is also a keyboard drawer that rolls out from the desk. Each desk is accompanied by a wooden desk chair.

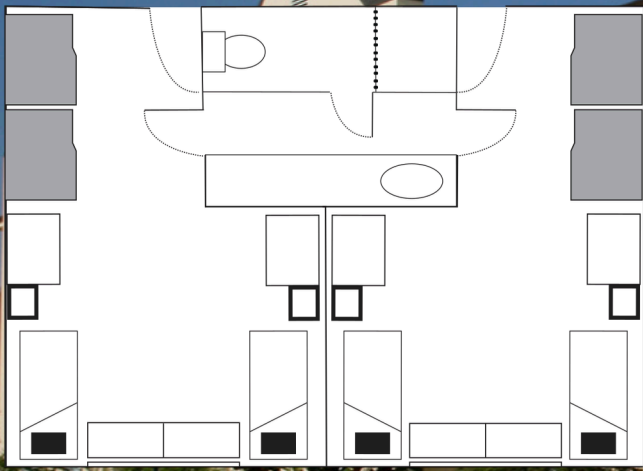
**Desk Hutch (two):** Length: 34”L x 29”H x 12”W  
 The desk hutch has one open shelf and a desk light.

**Dresser (two):** Length: 36”L x 29”H x 24”W  
 The dresser has three drawers.

**Nightstand (two):** Length: 16”L x 18.5”H x 19.5”W  
 The nightstand has one drawer.

**Windows:** Depending on the floor/room, there are two or three windows of varying heights and widths. All windows come with blinds.





SPRING HILL  
COLLEGE

## VISCARDI HALL FIRST-YEAR RESIDENCE HALL

### FEATURES

- Approximately 11/2 minute walk to the center of campus.
- Room dimensions 15' x 12 1/2'.
- Same gender by suite.
- Jack and Jill rooms connected by the restroom.
- Close proximity to the Arthur Recreation Center, Lucey Administration Center, Einstein's Bagel and the Library
- Television lounge with foosball and piano
- Laundry facilities on the garden level.
- Cable connection and two internet jacks in each room.
- Blinds.
- Extra-long twin-sized beds.

### FURNITURE SPECIFICATIONS

Bed Frame (two): Length: 83.25" L x 14" H (from the ground)  
The beds have wooden frames with an extra-long twin mattress. All beds are fixed in height and cannot be bunked.

Bookshelf (two): 24" L x 30" H x 17.5" W  
The bookshelf has three open shelves.

Wardrobe Closet (two): 47" L x 57" H  
Each closet has a wardrobe bar for hangers. The wardrobe has doors.

Desk (two): 48" L x 30" H x 24" W  
The desks are wooden with one drawer and two shelves on the right-hand side. There is also a keyboard drawer that rolls out from the desk. Each desk is accompanied by an upholstered desk chair.

Dresser (two): Length: 48" H x 29.4" W  
The dresser has three drawers.

Windows (three): Length: 39" L x 57" H

